



**9,500 SF CORNER UNIT FOR LEASE
SUGAR GROVE, ILLINOIS**

- AVAILABLE SIZE:** 9,500 square feet
- ADDRESS:** 1012 Airpark Drive, Suites 1&2, Sugar Grove, IL 60554
- OFFICE AREA:** 1,750 sf; Large General Office, 5 Private Offices, Lunchroom, 3 washrooms
- LOADING:** (2) 12' x 14' Drive-in-Doors & Exterior Dock (located in front of bldg)
- CEILINGS:** 18' Clear
- POWER:** 225 Amps 277/480 Volt / 3 Phase
- AVAILABLE:** By Agreement
- LEASE PRICE:** \$7.00 psf gross; \$5,550.00 per month
- COMMENTS:** Masonry Multi-Tenant located west of Rt 47, north of Rt 30, close to the Aurora Municipal Airport. Abundant Parking!

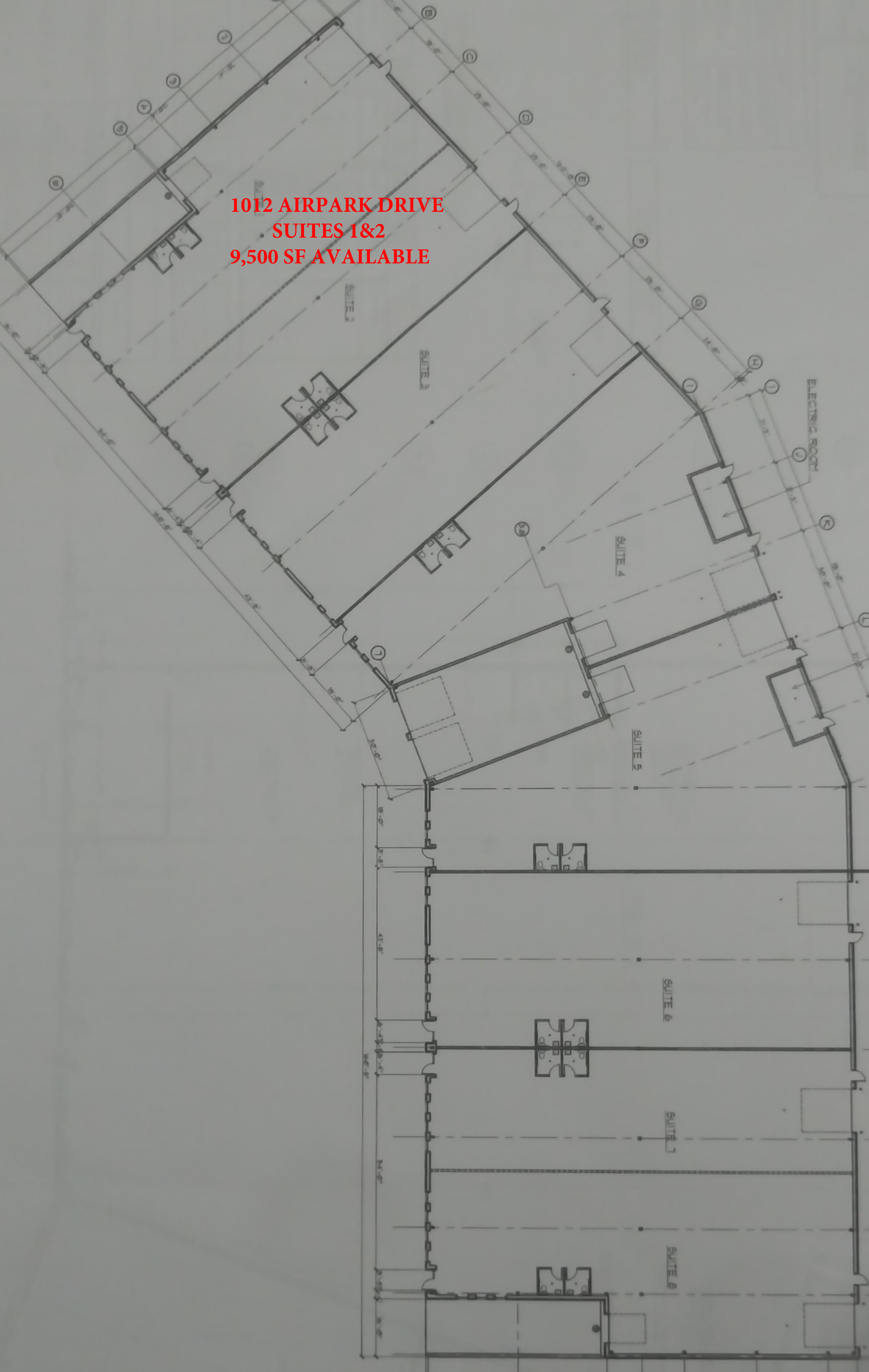
Contact Steve Morken for more information

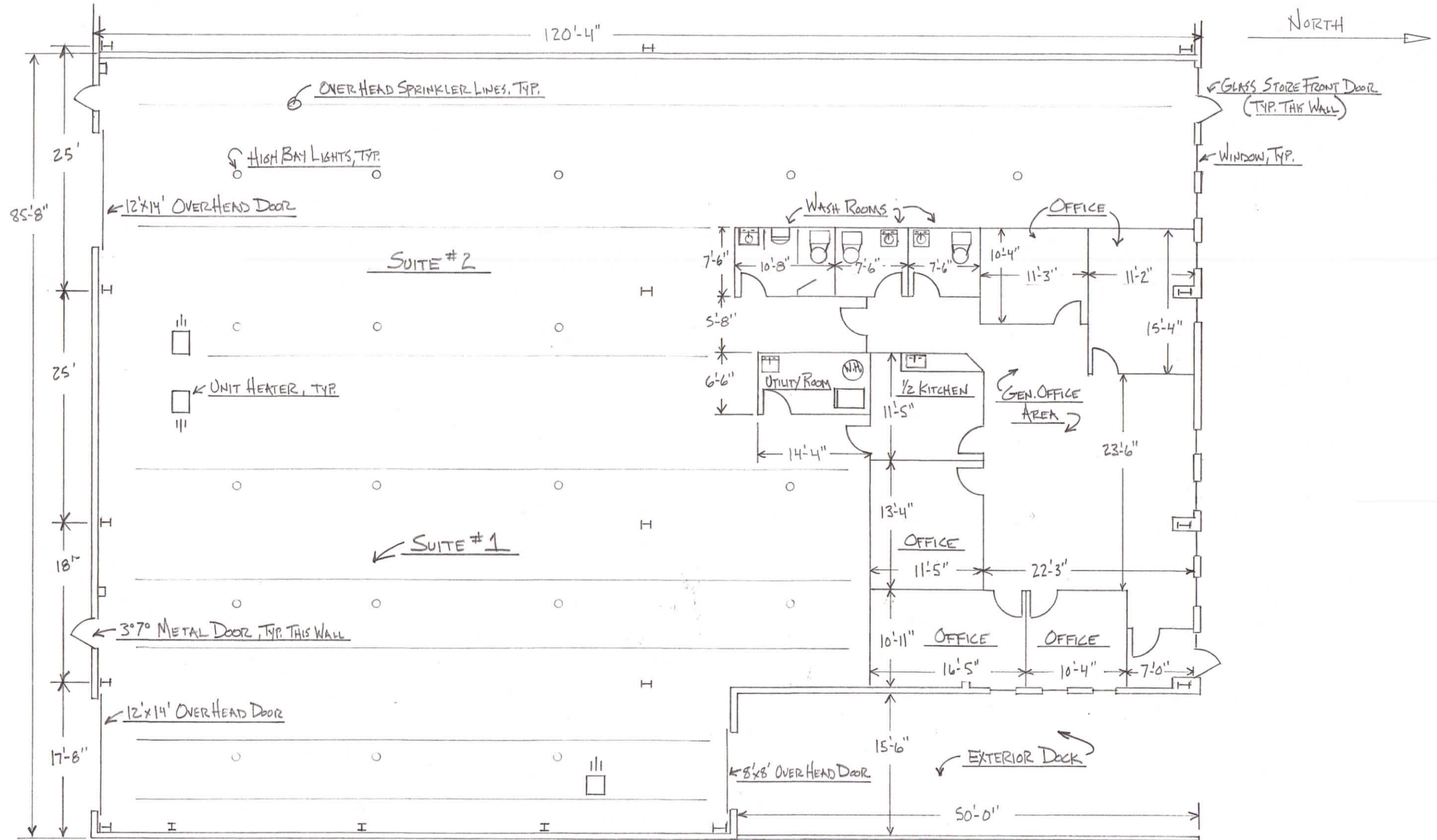
smorken@morkenassociates.com

630-567-7800 Cell

All information herein is from sources deemed reliable but not guaranteed accurate. Subject to errors, omissions, and to change of price and terms, prior lease, all without notice. The Listing agent makes no warranties or representations about the information contained in this form, therefore, it is the Tenant's/Purchaser's responsibility to ascertain its requirements and to determine that specifications listed on this listing form are acceptable to the Tenant/Purchaser.

**1012 AIRPARK DRIVE
SUITES 1&2
9,500 SF AVAILABLE**





NOTES:

- 18' LOW EAVE
- 24' HIGH EAVE
- 32 PARKING SPACES
- ELECTRIC PER SUITE, 480/277, 225AMP 4 WIRE 3 PHASE
- EXTERIOR FENCED AREA
- APPROXIMATELY 9,500 S.F.

SUITE 1 & 2 AIRPARK, SUGAR GROVE	
FLOOR PLAN	DATE: 7-18-18
SCALE: 3/32" = 1'-0" DRAWN BY: DON RAY	