

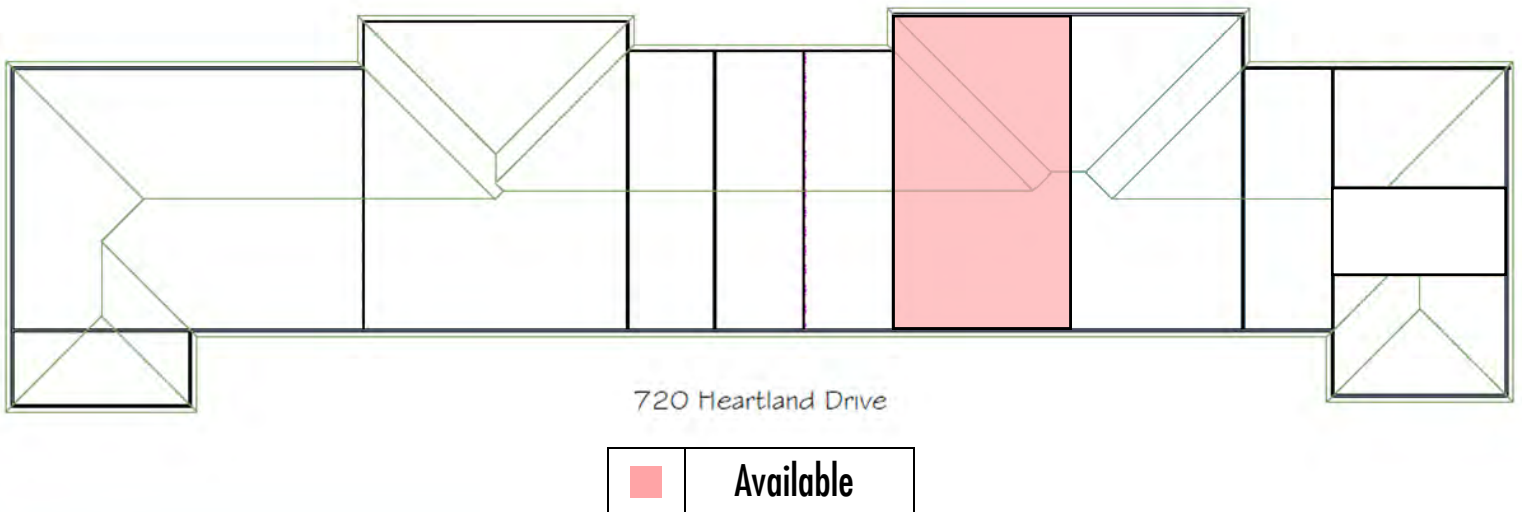
# INDUSTRIAL CONDO AVAILABLE FOR LEASE OR PURCHASE

720 HEARTLAND DRIVE, UNIT K

SUGAR GROVE, IL



- AVAILABLE SPACE: APPROXIMATELY 4,150 SF
- LEASE RATE: \$7.50 PSF (MODIFIED GROSS) AS-IS
- SALE PRICE: NEGOTIABLE
- CEILING HEIGHT: 17'
- AVAILABLE PARKING: 76 SPACES
- BUILDING SIZE: 34,000 SF
- YEAR BUILT: 2006
- ZONING: I-1



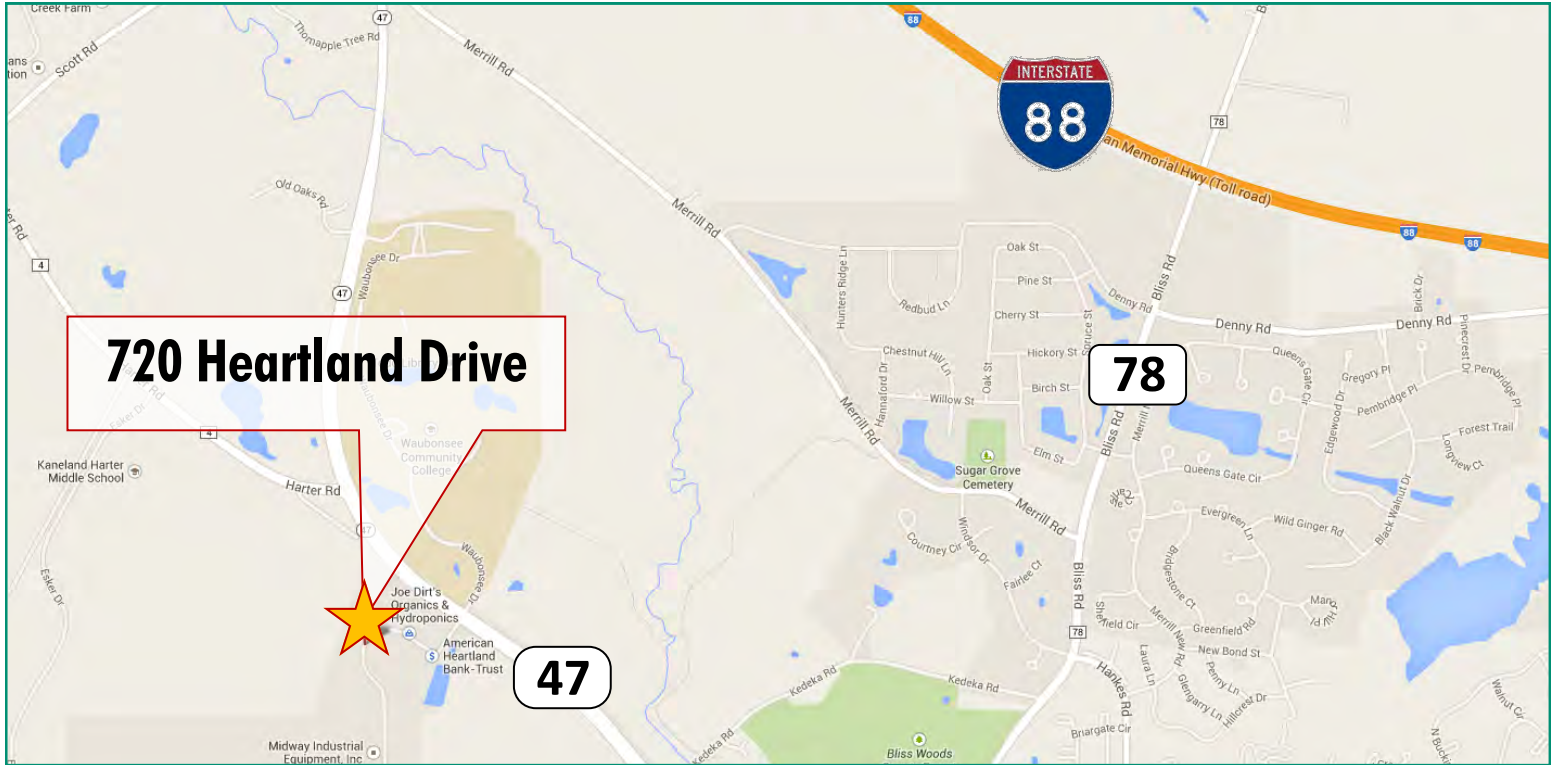
**Joseph C. Santucci**  
847.506.1000 ext. 5140  
jcs@avalonreal.com

**Carlo J. Santucci**  
847.506.1000 ext. 5132  
carlo@avalonreal.com

# INDUSTRIAL SPACE AVAILABLE FOR LEASE

## 720 HEARTLAND DRIVE, UNIT K

SUGAR GROVE, IL



**Joseph C. Santucci**  
847.506.1000 ext. 5140  
jcs@avalonreal.com

**Carlo J. Santucci**  
847.506.1000 ext. 5132  
carlo@avalonreal.com