

FOR SALE/LEASE

INDUSTRIAL PROPERTY - SUGAR GROVE, IL



| | |
|-----------------------|---|
| LOCATION: | 11 Duffy Lane, Sugar Grove, IL |
| BUILDING SIZE: | 12,000 S.F. |
| LOT SIZE: | 1.03 Acres |
| ASKING PRICE: | \$900,000 |
| LEASE RATE: | \$7.00/s.f. NNN |
| PROPERTY DESCRIPTION: | <ul style="list-style-type: none">• 2 Drive-in-doors, 1 Dock• 14 -18' ceiling height• 800 Amps, Sprinklered & Security Camera• Freezer & Refrigeration in warehouse• 2 Gas hung units in warehouse• 10" concrete floor and 12" concrete walls• Clear span with new LED lights |



For more information on this property contact:

DOLAN & MURPHY, INC. 630-801-8800

J.D. Dolan, Ext. 106

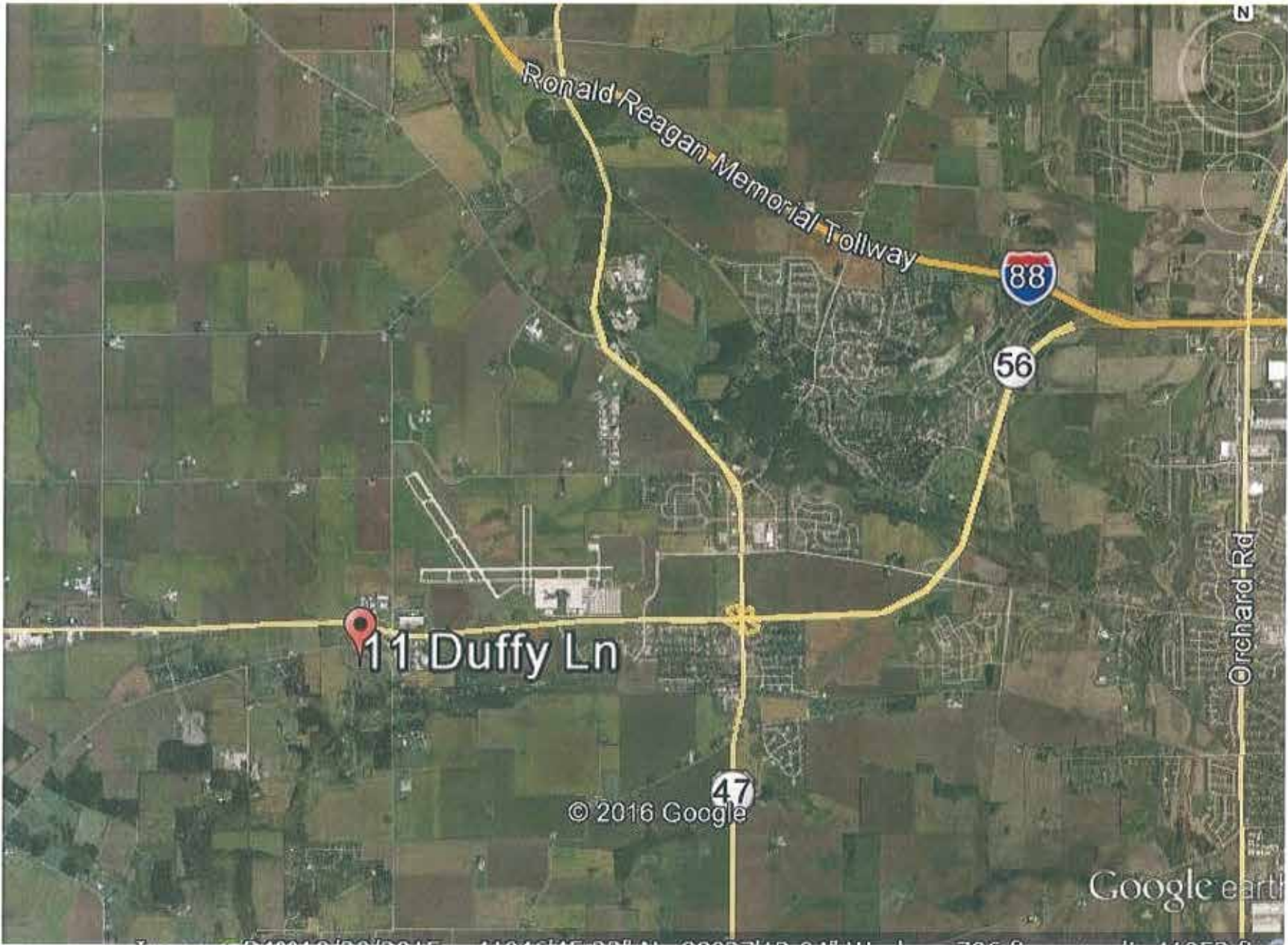
jddolan@dolanmurphy.com

www.dolanmurphy.com











© 2016 Google

Google earth